

dba
DISC BRAKES AUSTRALIA

//JANUARY 2024

NEW PRODUCT UPDATE



STREETSERIES

4000SERIES

5000SERIES

STREET
SERIES

STREET
PERFORMANCE

XTREME
PERFORMANCE

RACE
PERFORMANCE

THE ORIGINAL



4000SERIES

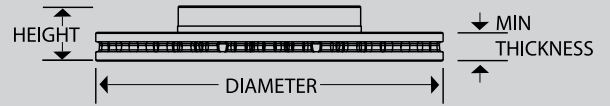
STREET
PERFORMANCE

XTREME
PERFORMANCE

Introducing the first upgrade rotor for Australia's #1 selling vehicle, the next-gen Ford Ranger. True to our ambition of being first to market.

FOR MORE INFO VISIT
DBA.COM.AU

dba
DISC BRAKES AUSTRALIA



**FORD RANGER ,
VOLKSWAGEN AMAROK**

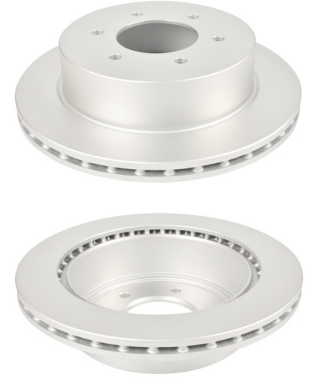
Part No : DBA3162E

Barcode : 9316391490810



DESCRIPTION & DIMENSIONS (mm)

| | |
|-------------------|-----------|
| Surface Design | Enshield |
| Vent Design | KP Vented |
| Diameter | 332.5 |
| Height | 8.6 |
| Thickness | 24 |
| Minimum Thickness | 22 |
| Centre Hole | 93 |
| No. Bolts | 6 |
| Position | Rear |
| Year Manufactured | 2023 -> |



STREETSERIES

1

**FORD RANGER &
VOLKSWAGEN AMAROK**

Part No : DBA43162

Barcode : 9316391490858



DESCRIPTION & DIMENSIONS (mm)

| | |
|-------------------|-----------|
| Surface Design | HD |
| Vent Design | KP Vented |
| Diameter | 332.5 |
| Height | 8.6 |
| Thickness | 24 |
| Minimum Thickness | 22 |
| Centre Hole | 93 |
| No. Bolts | 6 |
| Position | Rear |
| Year Manufactured | 2023 -> |



4000SERIES

2

**FORD RANGER &
VOLKSWAGEN AMAROK**

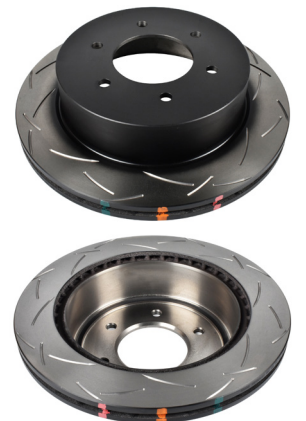
Part No : DBA43162S

Barcode : 9316391490834



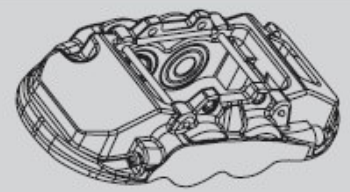
DESCRIPTION & DIMENSIONS (mm)

| | |
|-------------------|-----------|
| Surface Design | T3 |
| Vent Design | KP Vented |
| Diameter | 332.5 |
| Height | 8.6 |
| Thickness | 24 |
| Minimum Thickness | 22 |
| Centre Hole | 93 |
| No. Bolts | 6 |
| Position | Rear |
| Year Manufactured | 2023 -> |



4000SERIES

3



MAZDA

4

Part No: DBAC1512
Left Hand Caliper
Barcode: 9316391492463

Part No: DBAC1513
Right Hand Caliper
Barcode: 9316391492470

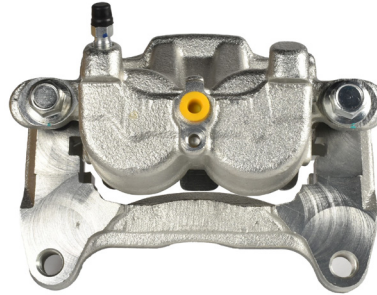
| DESCRIPTION | DIMENSIONS (mm) |
|--------------------|-----------------|
| Caliper Type | Floating |
| No Piston | 2 |
| Piston Diameter mm | 45.4 |
| Disc Pad | DB1916 |
| Disc Rotor | DBA3550E |
| Front/Rear | Front |
| Sensor | |
| HB Shoe | |



Suitable for use with

CX-5 KF 2.2L Twin Turbo Diesel AWD

5/2018 on



STREET
SERIES

SUBARU

5

Part No: DBAC1532
Left Hand Caliper
Barcode: 9316391493132

Part No: DBAC1533
Right Hand Caliper
Barcode: 9316391493149

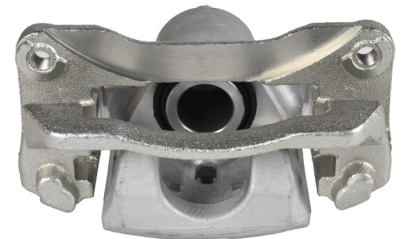
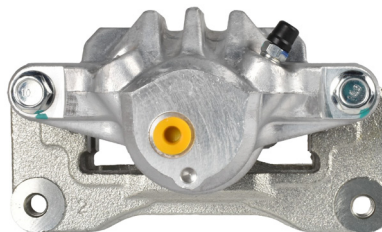
| DESCRIPTION | DIMENSIONS (mm) |
|--------------------|-----------------|
| Caliper Type | Floating |
| No Piston | 1 |
| Piston Diameter mm | 38.0 |
| Disc Pad | DB1803 |
| Disc Rotor | DBA2661E |
| Front/Rear | Rear |
| Sensor | |
| HB Shoe | DBAS1857 |



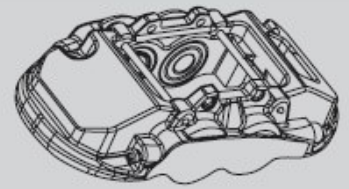
Suitable for use with

Liberty BL 2.5L Petrol AWD
Liberty BP 2.0L Petrol AWD
Outback BP 2.5L Petrol AWD
Outback BP 3.0L Petrol AWD

8/2007 - 8/09
5/2005 - 9/09
3/2005 - 6/07
10/2003 - 8/09



STREET
SERIES



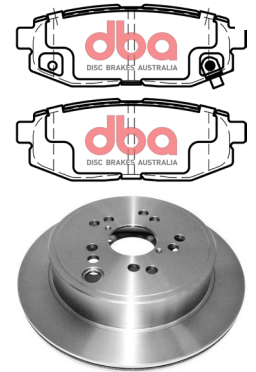
SUBARU

6

Part No: DBAC1534
Left Hand Caliper
Barcode: 9316391493156

Part No: DBAC1535
Right Hand Caliper
Barcode: 9316391493163

| DESCRIPTION | DIMENSIONS (mm) |
|--------------------|-----------------|
| Caliper Type | Floating |
| No Piston | 1 |
| Piston Diameter mm | 40.0 |
| Disc Pad | DB1789 |
| Disc Rotor | DBA2663E-10 |
| Front/Rear | Rear |
| Sensor | |
| HB Shoe | DBAS2033 |



Suitable for use with

Liberty BR 2.5L Petrol Turbo AWD

5/2013 - 11/14



STREET
SERIES

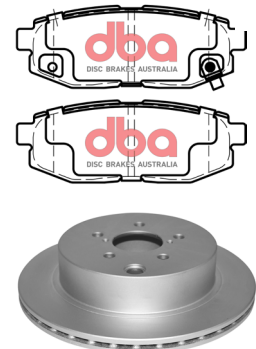
SUBARU

7

Part No: DBAC1534
Left Hand Caliper
Barcode: 9316391493156

Part No: DBAC1535
Right Hand Caliper
Barcode: 9316391493163

| DESCRIPTION | DIMENSIONS (mm) |
|--------------------|-----------------|
| Caliper Type | Floating |
| No Piston | 1 |
| Piston Diameter mm | 40.0 |
| Disc Pad | DB1789 |
| Disc Rotor | DBA2669E |
| Front/Rear | Rear |
| Sensor | |
| HB Shoe | DBAS2019 |



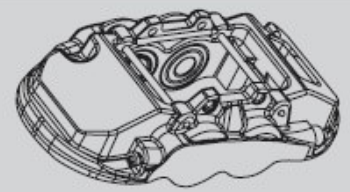
Suitable for use with

Forester SJ 2.0L Petrol Turbo AWD

1/2013 - 9/18



STREET
SERIES



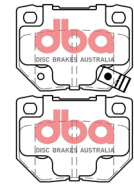
SUBARU

8

Part No: DBAC1536
Left Hand Caliper
Barcode: 9316391493170

Part No: DBAC1537
Right Hand Caliper
Barcode: 9316391493187

| DESCRIPTION | DIMENSIONS (mm) |
|--------------------|-----------------|
| Caliper Type | Floating |
| No Piston | 2 |
| Piston Diameter mm | 38.0 |
| Disc Pad | DB1220 |
| Disc Rotor | DBA653 |
| Front/Rear | Rear |
| Sensor | |
| HB Shoe | DBAS1846 |



Suitable for use with

Impreza WRX GD 2.0L Petrol Turbo AWD
Impreza WRX GD 2.5L Petrol Turbo AWD

12/2002 - 9/05
5/2005 - 7/07



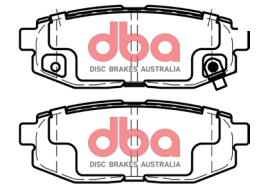
SUBARU

9

Part No: DBAC1540
Left Hand Caliper
Barcode: 9316391493217

Part No: DBAC1541
Right Hand Caliper
Barcode: 9316391493224

| DESCRIPTION | DIMENSIONS (mm) |
|--------------------|-----------------|
| Caliper Type | Floating |
| No Piston | 1 |
| Piston Diameter mm | 40.0 |
| Disc Pad | DB1789 |
| Disc Rotor | DBA2653-10 |
| Front/Rear | Rear |
| Sensor | |
| HB Shoe | DBAS1950 |

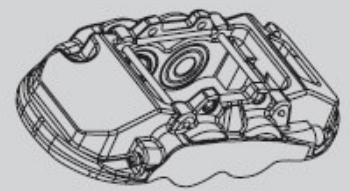


Suitable for use with

Tribeca 3.0L Petrol AWD
Tribeca 3.6L 6Cyl Petrol AWD

3/2006 - 9/07
8/2007 - 1/14





VOLKSWAGEN

10

Part No: DBAC1542
Left Hand Caliper
Barcode: 9316391493231

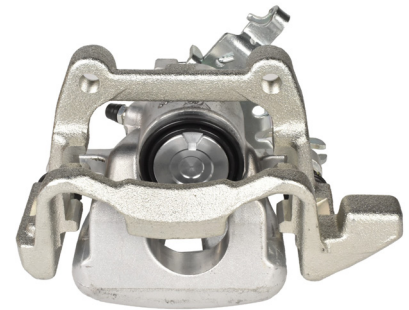
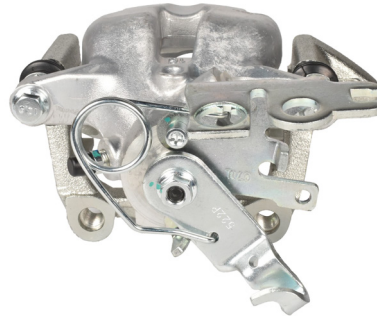
Part No: DBAC1543
Right Hand Caliper
Barcode: 9316391493248

| DESCRIPTION | DIMENSIONS (mm) |
|--------------------|-----------------|
| Caliper Type | Floating |
| No Piston | 1 |
| Piston Diameter mm | 41.0 |
| Disc Pad | DB1865 |
| Disc Rotor | DBA2813E |
| Front/Rear | Rear |
| Sensor | |
| HB Shoe | Mechanical |



Suitable for use with

Caddy 2K 1.6L (BSE Engine) Petrol FWD 8/2006 - 11/10
Caddy 2K 1.9L (BLS Engine) Turbo Diesel FWD 8/2006 - 11/10



STREET
SERIES

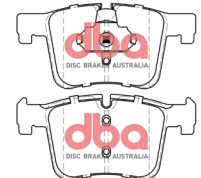
BMW

11

Part No: DBAC1544
Left Hand Caliper
Barcode: 9316391493385

Part No: DBAC1545
Right Hand Caliper
Barcode: 9316391493392

| DESCRIPTION | DIMENSIONS (mm) |
|--------------------|-----------------|
| Caliper Type | Floating |
| No Piston | 1 |
| Piston Diameter mm | 57.0 |
| Disc Pad | DB2223 |
| Disc Rotor | DBA2284E |
| Front/Rear | Front |
| Sensor | DBAWS1066 |
| HB Shoe | |

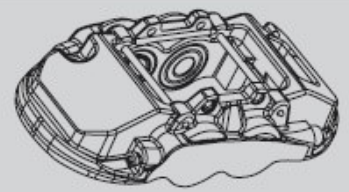


Suitable for use with

228i F22 2.0L Petrol Turbo RWD 8/2014 on
228i F23 2.0L Petrol Turbo RWD 2/2015 - 10/16
328i F30 2.0L Petrol Turbo RWD 2/2012 - 9/15
328i F31 2.0L Petrol Turbo RWD 3/2013 - 9/15
330i F30 2.0L Petrol Turbo RWD 10/2015 - 1/19
428i F32 2.0L Petrol Turbo RWD 10/2013 - 2/17
428i F33 2.0L Petrol Turbo RWD 1/2014 - 2/17
428i F36 2.0L Petrol Turbo RWD 5/2014 - 1/18
430i F32 2.0L Petrol Turbo RWD 5/2016 - 5/20
430i F33 2.0L Petrol Turbo RWD 5/2016 - 4/17
430i F36 2.0L Petrol Turbo RWD 5/2016 - 4/17



STREET
SERIES

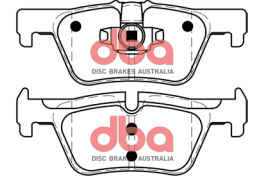


BMW

Part No: DBAC1546
Left Hand Caliper
Barcode: 9316391493408

Part No: DBAC1547
Right Hand Caliper
Barcode: 9316391493415

| DESCRIPTION | DIMENSIONS (mm) |
|--------------------|-----------------|
| Caliper Type | Floating |
| No Piston | 1 |
| Piston Diameter mm | 40.0 |
| Disc Pad | DB2224 |
| Disc Rotor | DBA2679E |
| Front/Rear | Rear |
| Sensor | DBAWS1067 |
| HB Shoe | DBAS1997 |

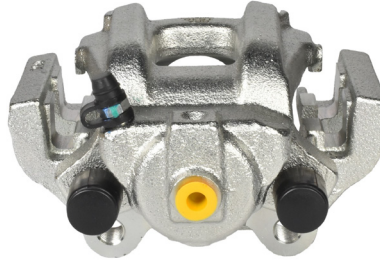


12

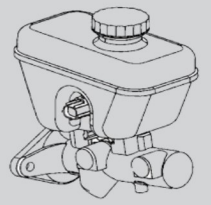
Suitable for use with

116i F20 1.6L Petrol Turbo RWD
118D F20 2.0L Turbo Diesel RWD
118i F20 1.6L Petrol Turbo RWD
120i F20 1.6L Petrol Turbo RWD

10/2011 - 5/15
10/2011 - 5/15
10/2011 - 5/15
6/2015 - 10/16



STREET
SERIES



HOLDEN

Part No: DBABM11117

Barcode: 9316391473486

Suitable for use with

Captiva CG 2.4L Petrol FWD 1/2011 - 5/12

DESCRIPTION DIMENSIONS (mm)

| | |
|------------|------------|
| Bore Size | 25.40 (1") |
| Front Port | 12 x 1 Inv |
| Rear Port | 12 x 1 Inv |

13



STREET
SERIES

MITSUBISHI

Part No: DBABM11144

Barcode: 9316391473752

Suitable for use with

Lancer CJ 2.0L Petrol FWD 7/2007 - 2/14
 Lancer CJ 2.4L Petrol FWD 6/2008 - 12/17
 Outlander ZG 2.4L Petrol 4WD 10/2007 - 8/09
 Outlander ZH 2.4L Petrol 4WD 9/2009 - 10/12

DESCRIPTION DIMENSIONS (mm)

| | |
|------------|----------------|
| Bore Size | 20.64 (13/16") |
| Front Port | 12 x 1 Ball |
| Rear Port | 12 x 1 Ball |

14



STREET
SERIES

NISSAN

Part No: DBABM11201

Barcode: 9316391483881

Suitable for use with

X-Trail T32 2.5L Petrol FWD 2/2017 - 8/22

DESCRIPTION DIMENSIONS (mm)

| | |
|------------|----------------|
| Bore Size | 23.81 (15/16") |
| Front Port | 12 x 1 Ball |
| Rear Port | 12 x 1 Ball |

15



STREET
SERIES



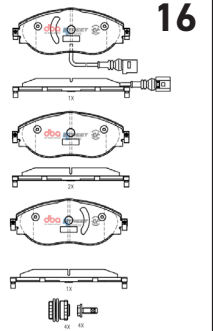
CUPRA FORMENTOR 2022 -> F

Part No : **DB8849SSEV**

Barcode : **9316391489579**



| DESCRIPTION & DIMENSIONS (mm) | | | |
|-------------------------------|------------------------------------|---------------|-----|
| Set Contains | LH Inner + RH Inner + 2 Outer Pads | | |
| Pad Overall Length | 175 | Pad Length | n/a |
| Pad Overall Height | 69.5 | Pad Height | n/a |
| Pad Thickness | 20 | Pad Thickness | n/a |
| Position | Front | | |
| Year | 2022 -> | | |



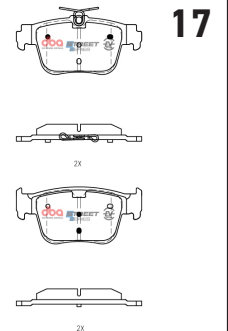
CUPRA FORMENTOR 2022 -> R

Part No : **DB8850SSEV**

Barcode : **9316391490193**



| DESCRIPTION & DIMENSIONS (mm) | | | |
|-------------------------------|-----------------------------|---------------|-----|
| Set Contains | 2 Inner Pads + 2 Outer Pads | | |
| Pad Overall Length | 122.8 | Pad Length | n/a |
| Pad Overall Height | 57.7 | Pad Height | n/a |
| Pad Thickness | 15.2 | Pad Thickness | n/a |
| Position | Rear | | |
| Year | 2022 -> | | |



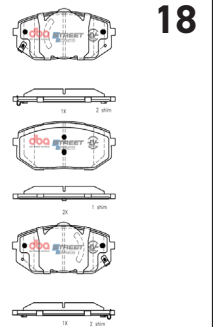
**HYUNDAI IONIQ 5/
KIA EV6 2022 -> F**

Part No : **DB2647SSEV**

Barcode : **9316391489876**



| DESCRIPTION & DIMENSIONS (mm) | | | |
|-------------------------------|------------------------------------|---------------|-----|
| Set Contains | LH Inner + RH Inner + 2 Outer Pads | | |
| Pad Overall Length | 144.5 | Pad Length | n/a |
| Pad Overall Height | 64.2 | Pad Height | n/a |
| Pad Thickness | 17 | Pad Thickness | n/a |
| Position | Front | | |
| Year | 2022 -> | | |



**HYUNDAI IONIQ 5/
KIA EV6 2022 -> R**

Part No : **DB2648SSEV**

Barcode : **9316391490056**



| DESCRIPTION & DIMENSIONS (mm) | | | |
|-------------------------------|------------------------------------|---------------|-----|
| Set Contains | LH Inner + RH Inner + 2 Outer Pads | | |
| Pad Overall Length | 123 | Pad Length | n/a |
| Pad Overall Height | 51 | Pad Height | n/a |
| Pad Thickness | 15 | Pad Thickness | n/a |
| Position | Rear | | |
| Year | 2022 -> | | |

